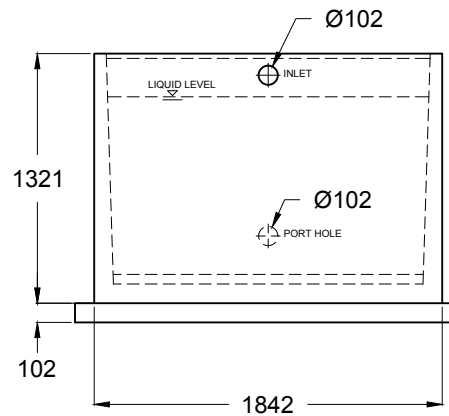
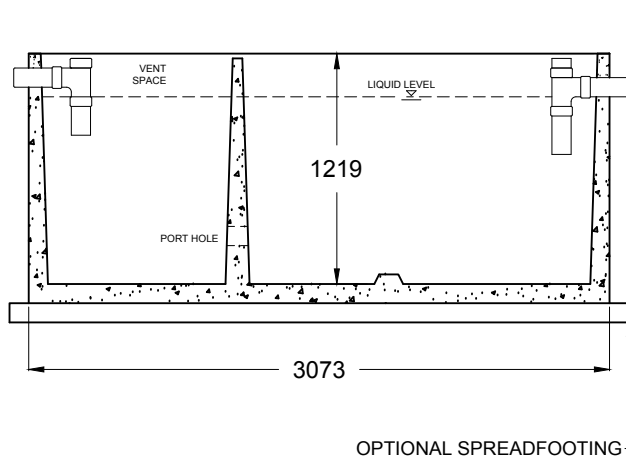
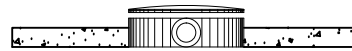
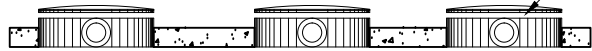


Ø610
POLYLOK ACCESS
TYP X3



GENERAL NOTES

- PRODUCT MANUFACTURED IN ACCORDANCE WITH CSA 23.4
- SITE INSTALLATION, BACKFILLING & SUITABILITY FOR USE IS RESPONSIBILITY OF OTHERS
- STEEL PRODUCTS MANUFACTURED IN ACCORDANCE WITH CSA W59
- MINIMUM CONCRETE STRENGTH: 32 MPa



22765 FRASER HIGHWAY
LANGLEY, BC V3A 4R6
TEL: 604-534-2911 FAX: 604-533-3238
EMAIL: INFO@FRASERWAYPRECAST.COM
WWW.FRASERWAYPRECAST.COM

**4623 L (1000 GAL) - 2 CHAMBER
CONCRETE TREATMENT TANK**

DRAWN BY: AY	DIMENSIONS IN MILLIMETERS UNLESS OTHERWISE SPECIFIED	DWG #: TT
DATE: 23-Sep-13	TOLERANCES ± 5	1000

THIS DRAWING AND ALL INFORMATION, IS & SHALL REMAIN THE PROPERTY OF FRASERWAY PRECAST. ANY USE, ALTERATIONS, OR REPRODUCTIONS WITHOUT WRITTEN CONSENT FROM FRASERWAY PRECAST IS STRICTLY PROHIBITED.