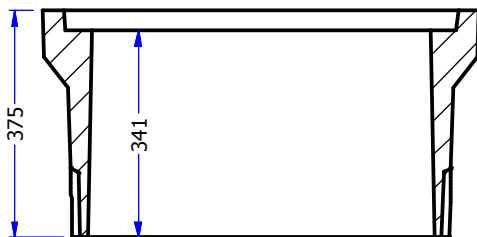


R50  
1 /SIDE

R35  
2 /END

105 kg



SECTION VIEW

- PRODUCT MANUFACTURED IN ACCORDANCE WITH CSA A23.4
- DESIGNED FOR BOULEVARD (OFF-ROAD) USE
- H20 STATIC LOADING
- STEEL PRODUCTS MANUFACTURED UNDER CSA W47.1 IN ACCORDANCE WITH CSA W59
- SITE INSTALLATION, BACKFILLING, AND SUITABILITY FOR USE IS THE RESPONSIBILITY OF OTHERS
- MINIMUM CONCRETE STRENGTH AT 28 DAYS: 35 MPA

**FRASERWAY PRECAST LTD**

WWW.FRASERWAYPRECAST.COM

604-534-2911

**5686 SERVICE BOX 14" RISER**

SIZE	DRAWING #	16304	REV	SHEET
A	5686SB R14			1 / 1