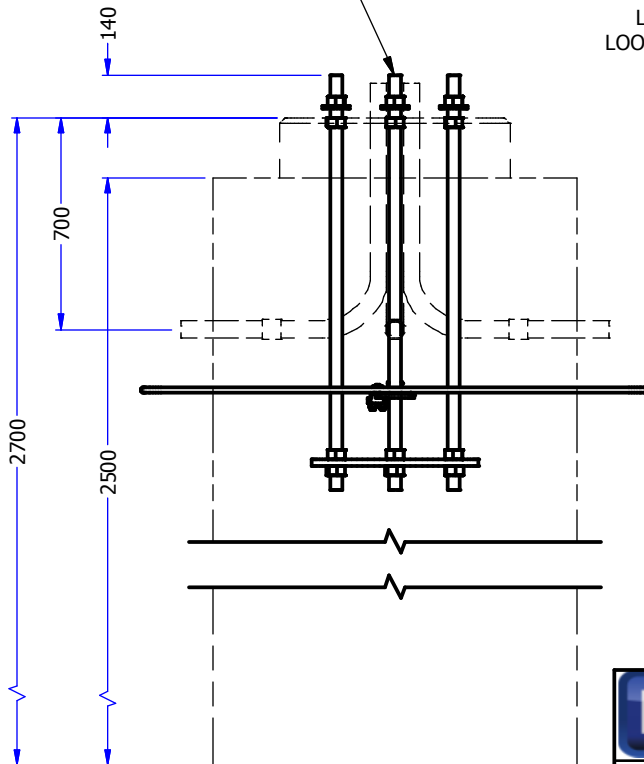
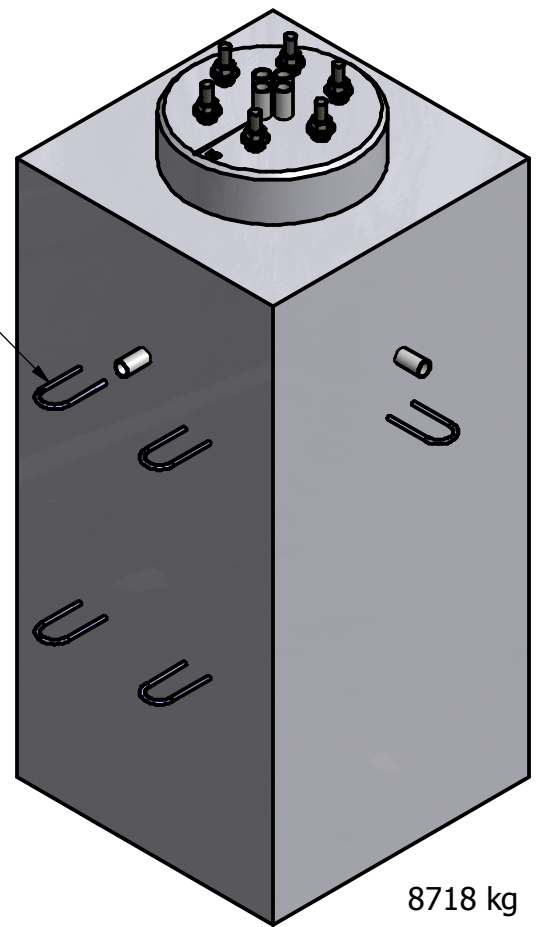


6x  $\phi 1\frac{1}{2} \times 54$ " 4140  
GALVANIZED ANCHOR BOLTS  
PER MOT SP635 DRAWING 1.1.25



WIRE ROPE  
LIFTING  
LOOPS (5x)



8718 kg

- PRODUCT MANUFACTURED IN ACCORDANCE WITH CSA A23.4
- STEEL PRODUCTS MANUFACTURED UNDER CSA W47.1 IN ACCORDANCE WITH CSA W59
- MINIMUM CONCRETE STRENGTH AT 28 DAYS: 30 MPA
- MAXIMUM WATER-CEMENT RATIO OF 0.45 & AIR CONTENT OF 5-7%
- EXPOSURE CLASS F2/C4
- HARD STEEL FINISH
- PER MOT SP635 DRAWING 1.1.23/1.1.24

**FRASERWAY PRECAST LTD**

WWW.FRASERWAYPRECAST.COM

604-534-2911

**MOT TYPE 'M2' POLE BASE**

SIZE	DRAWING #	15540	REV	SHEET
A	MOT M2			1/1