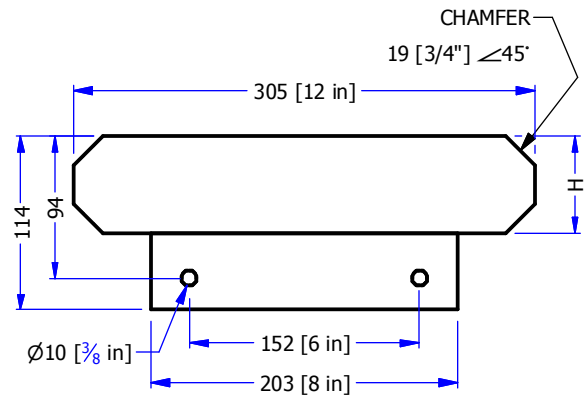
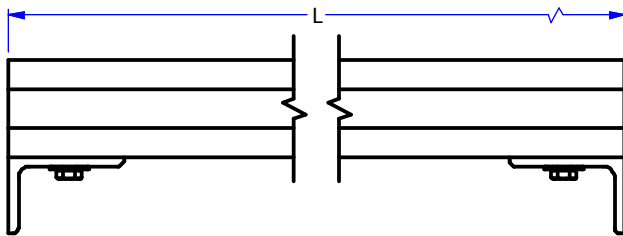


STANDARD DOUBLE BULL NOSE STAIR TREADS

| #       | ITEM # | FINISH            | L          | H         | KG  |
|---------|--------|-------------------|------------|-----------|-----|
| ST30    | 13250  | BROOM FINISH      | 762 [30"]  | 64 [2.5"] | 38  |
| ST30 EA | 13255  | EXPOSED AGGREGATE | 762 [30"]  | 64 [2.5"] | 38  |
| ST36    | 13260  | BROOM FINISH      | 914 [36"]  | 64 [2.5"] | 45  |
| ST36 EA | 13265  | EXPOSED AGGREGATE | 914 [36"]  | 64 [2.5"] | 45  |
| ST42    | 13270  | BROOM FINISH      | 1067 [42"] | 64 [2.5"] | 52  |
| ST42 EA | 13275  | EXPOSED AGGREGATE | 1067 [42"] | 64 [2.5"] | 52  |
| ST48    | 13280  | BROOM FINISH      | 1219 [48"] | 64 [2.5"] | 59  |
| ST48 EA | 13285  | EXPOSED AGGREGATE | 1219 [48"] | 64 [2.5"] | 59  |
| ST60    | 13290  | BROOM FINISH      | 1524 [60"] | 89 [3.5"] | 100 |
| ST60 EA | 13295  | EXPOSED AGGREGATE | 1524 [60"] | 89 [3.5"] | 100 |
| ST72    | 13300  | BROOM FINISH      | 1829 [72"] | 89 [3.5"] | 122 |
| ST72 EA | 13305  | EXPOSED AGGREGATE | 1829 [72"] | 89 [3.5"] | 122 |



- PRODUCT MANUFACTURED IN ACCORDANCE WITH CSA A23.4
- MINIMUM CONCRETE STRENGTH AT 28 DAYS: 35 MPa
- GRADE 400 REBAR REINFORCEMENT
- EXPOSED AGGREGATE ON TOP SURFACE ONLY
- BRUSHED FINISH ON TOP SURFACE ONLY
- STEEL TROWEL FINISH ON BOTTOM SURFACE
- MOUNTING BRACKETS & HARDWARE INCLUDED

**FRASERWAY PRECAST LTD**

WWW.FRASERWAYPRECAST.COM

604-534-2911

**STAIR TREADS DOUBLE BULLNOSE  
EXPOSED AGGREGATE OR  
BROOM FINISH**

|      |           |     |       |
|------|-----------|-----|-------|
| SIZE | DRAWING # | REV | SHEET |
| A    | ST DBN-12 |     | 1/1   |