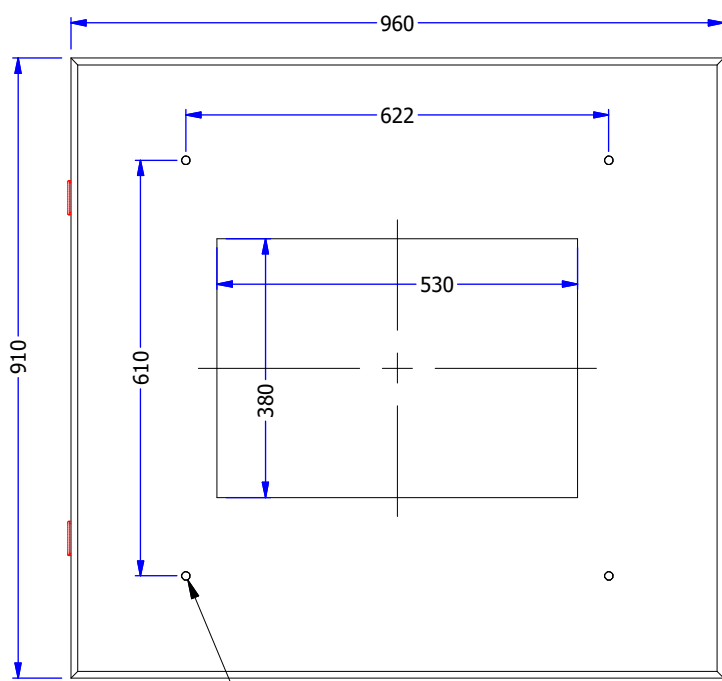
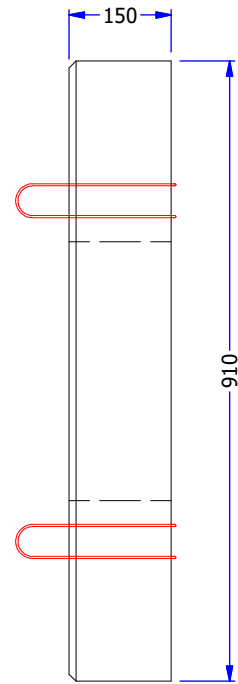


234 kg



THREADED INSERT
1/2-13unc (4x)



NOTES

- PRODUCT MANUFACTURED IN ACCORDANCE WITH CSA A23.4
- MINIMUM CONCRETE STRENGTH AT 28 DAYS: 32 MPA
- GRADE 400 REBAR
- STEEL TROWEL FINISH

WWW.FRASERWAYPREKAST.COM

(604) 534-2911



FRASERWAY PREKAST LTD
A BMGROUP COMPANY

CATV 4828 POWER AMPLIFIER PAD
960 x 910 x 150

SIZE	DRAWING #
A	

15048	REV	SHEET
4828 PAD	C	1/1