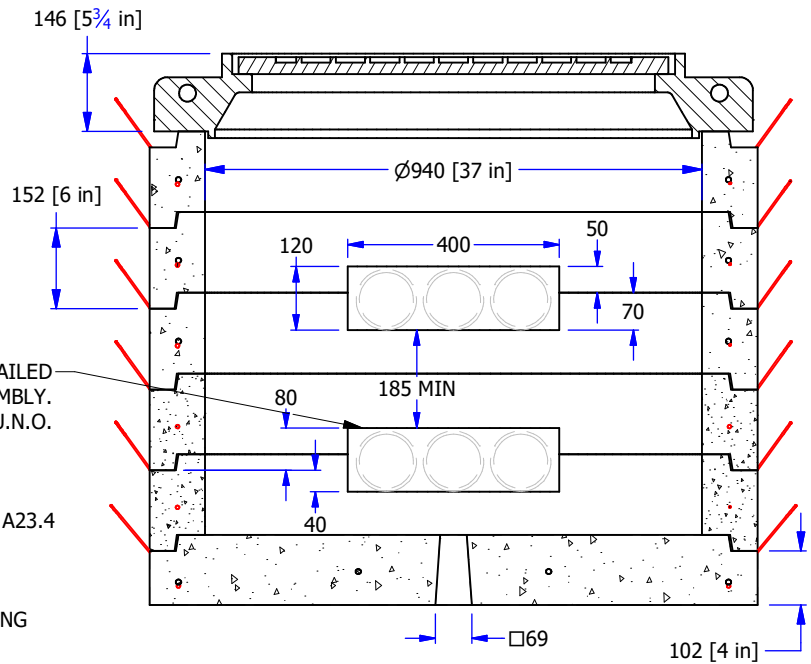
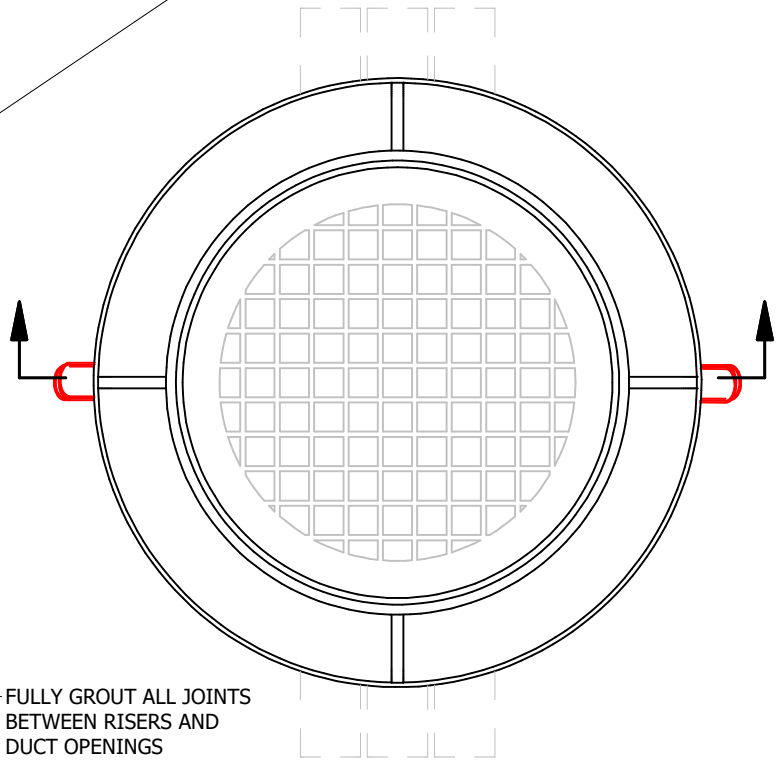
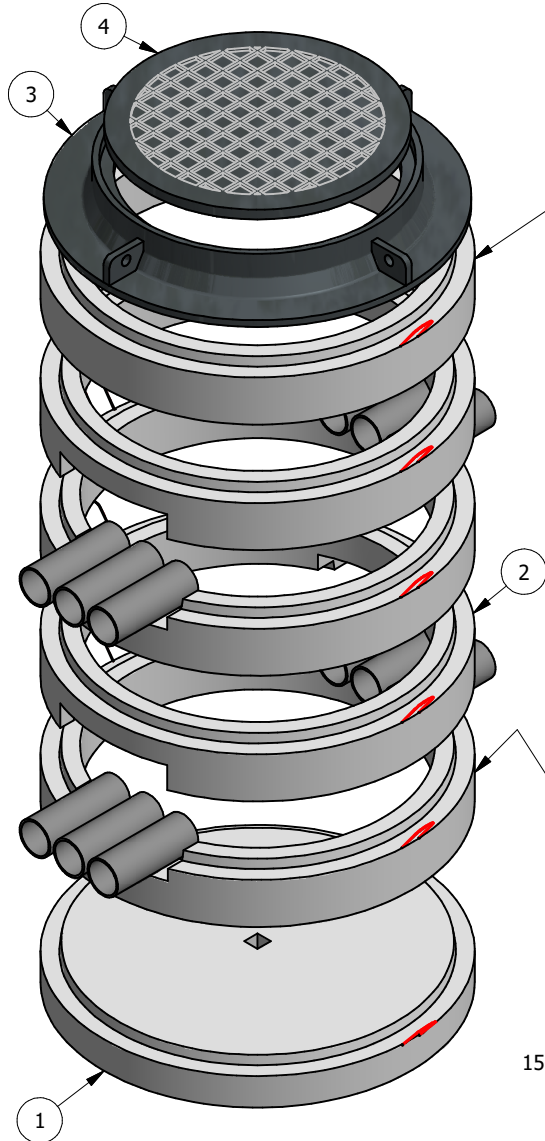


#	PART #	DESCRIPTION	CODE #	KG
1	VRR Ø940 B100	Ø940 [37"] RISER x100 [4"] w/ INTEGRAL BASE	14107	305
2	VRR Ø940 R150	Ø940 [37"] VAULT RISER RING x150 [6"]	14106	122
3	TR42 FRAME	CAST IRON FRAME TR42	17311	145
4	TR42 COVER	CAST IRON COVER TR42	17329	100

ADDITIONAL RISERS AVAILABLE:  
VRR Ø940 R100  
VRR Ø940 R125  
VRR Ø940 R150  
USE ONLY VRR Ø940 R150 RISERS  
ABOVE & BELOW DUCT CUTOUTS



DUCT OPENINGS BY CONTRACTOR AS DETAILED  
MAX 2 OPENINGS EACH SIDE OF THE ASSEMBLY.  
CUTOUT DIMENSIONS ARE MAXIMUMS U.N.O.

- PRODUCT MANUFACTURED IN ACCORDANCE WITH CSA A23.4
- MINIMUM CONCRETE STRENGTH AT 28 DAYS: 35 MPA
- STEEL TROWEL FINISH
- GRADE 400 REBAR REINFORCEMENT
- DESIGNED FOR ROADWAY USE BCL625 H20 LIVE LOADING
- WIRE ROPE LIFTING LOOPS PROVIDED

WWW.FRASERWAYPREKAST.COM

(604) 534-2911



**FRASERWAY PREKAST LTD**  
A BMGROUP COMPANY

## VAULT RISER RING Ø940 [37"] SERVICE BOX

SIZE DRAWING #

A

REV SHEET

B

1/1

VRR Ø940 SB