

Fraserway Prekast Ltd.

Cemetery Product Catalogue



FRASERWAY PREKAST LTD

Table of Contents

| | |
|--|----|
| About Us, Products, & Services | 3 |
| Wilbert Burial Vaults | 4 |
| FWP Burial Products | 7 |
| Love & Cherished® Infant Casket/Vaults | 11 |
| Urn Vaults | 12 |
| Custom Orders & Contact Us | 14 |



Why Choose Fraserway Prekast?

Fraserway Prekast Ltd. (FWP) has been a local family owned business since 1970. From one family to another, the quality tradition has been the key driver to the success of FWP. We have the depth of expertise to provide quality cemetery and precast products to help you successfully build your business.

- Manufacturers, wholesales and retails concrete products for cemetery, residential, commercial and civic installations.
- Official licensee of the Wilbert Burial products, the industry leader in cemetery products
- Products manufactured locally in Langley, BC providing employment for local families.

About the Products

- FWP operates under the ISO 9001-2008 business principles
- CSA certified
- All precast burial vaults are fabricated with a minimum 5,000 psi concrete
- Wilbert products utilize the highest quality of materials including ABS Trilon®, ABS Marbelon®, and Strentex®

Services

- Full service concrete facility in Langley, BC
- Engineering services available
- Full range of CAD drawings available
- Delivery available throughout Metro Vancouver and all of British Columbia
- On-site crane truck services available

Wilbert Burial Vaults

The Wilbert Bronze® Vault

Premium Protection • Triple Reinforced Burial Vault • Item #10798



Inside Dimensions

86" L x 30" W x 25 ½" H

Outside Dimensions

91 ⅞" L x 35" W x 34 ⅜" H

Total Weight

3000 lbs

The Wilbert Bronze Vault® is a meticulous engineered triple-reinforced burial vault. Constructed of high-strength concrete reinforced with high-impact ABS Trilon® interior, a bronze metal liner and ABS Marbelon® exterior, the cover is completely encased in bronze, making it the strongest and finest Wilbert burial vault. Customized name plate available upon request.

Bronze Triune® Vault

Premium Protection • Double Reinforced Burial Vault • Item #10770



Inside Dimensions

84 ¾" L x 29" W x 21 ½" H

Outside Dimensions

90 ½" L x 34 ⅞" W x 26 ¼" H

Lid Height

9 ¼"

Total Weight

2646 lbs

The Bronze Triune® is the finest double-reinforced burial vault featuring high-strength concrete reinforced with high-impact ABS Trilon® interior. Customized name plate available upon request.

Copper Triune® Vault

Premium Protection • Double Reinforced Burial Vault • Item #10778



Inside Dimensions

84 ¾" L x 29" W x 21 ½" H

Outside Dimensions

90 ½" L x 34 ⅞" W x 26 ¼" H

Lid Height

9 ¼"

Total Weight

2646 lbs

The Copper Triune® is a quality double-reinforced burial vault. The cover and base are reinforced with high-impact ABS Trilon® and copper bonded to high-strength concrete. The durability and beauty of the copper makes it an exceptional for burial vault construction. Customized name plate available upon request.

Wilbert Burial Vaults

Stainless Steel Triune® Vault

Standard Protection • Double Reinforced Burial Vault • Item #10794



Inside Dimensions

84 ¾" L x 29" W x 21 ½" H

Outside Dimensions

90 ½" L x 34 ⅝" W x 26 ¼" H

Lid Height

9 ¼"

Total Weight

2646 lbs

The Stainless Steel Triune® is an affordably priced double-reinforced burial vault. Reinforced with high-impact ABS Trilon® and brilliant stainless steel bonded to high-strength concrete. Customized name plate available upon request.

Cameo Rose® Triune® Vault

Standard Protection • Double Reinforced Burial Vault • Item #10776



Inside Dimensions

84 ¾" L x 29" W x 21 ½" H

Outside Dimensions

90 ½" L x 34 ⅝" W x 26 ¼" H

Lid Height

9 ¼"

Total Weight

2646 lbs

The Cameo Rose® Triune® is an elegant selection for those in search of a more feminine burial vault. Reinforced with high-impact ABS Trilon® and brilliant stainless steel bonded to high-strength concrete. The carapace features a brushed stainless steel finish with the Cameo Rose® plaque and nameplate. Customized name plate available upon request.

Venetian Triune® Vault

Basic Protection • Single Reinforced Burial Vault • Item #10796



Inside Dimensions

87" L x 31" W x 21 ¾" H

Outside Dimensions

90 ½" L x 34 ½" W x 26 ¼" H

Lid Height

9 ¼"

Total Weight

2672 lbs

The Venetian® is a single-reinforced burial vault constructed out of high-strength concrete, reinforced with high-impact ABS Marbelon®. The Venetian® features an elegant look of classic marble with a gothic carapace. Customized name plate available upon request.

Wilbert Burial Vaults

Continental® Vault

Basic Protection • Single Reinforced Burial Vault • Item #10772



Inside Dimensions

87" L x 31" W x 21 ¾" H

Outside Dimensions

90 ½" L x 34 ½" W x 26 ¼" H

Lid Height

9 ¼"

Total Weight

2594 lbs

The Continental® is a single-reinforced burial vault built with high-strength concrete exterior and reinforced with Strentex® on the base and cover. Customized name plate available upon request.

Oversized Continental® Vault

Basic Protection • Single Reinforced Burial Vault • Item #10774



Inside Dimensions

90" L x 34" W x 26" H

Outside Dimensions

94 ½" L x 38 ¾" W x 28 ¼" H

Lid Height

11"

Total Weight

3052 lbs

The Oversized Continental® is a single-reinforced burial vault built with high-strength concrete exterior and reinforced with Strentex® on the base and cover. Customized name plate available upon request.

Monticello® Vault

Basic Protection • Single Reinforced Burial Vault • Gold - Item #10778 • Silver - Item #10790



Inside Dimensions

87" L x 31" W x 21 ¾" H

Outside Dimensions

94 ½" L x 38 ¾" W x 28 ¼" H

Lid Height

8"

Total Weight

2312 lbs

The Monticello is an entry level, single-reinforced burial vault using high-strength concrete exterior and reinforced with Strentex on the base and cover. It is a 100% sealed burial unit, available in silver and gold. Customized name plate available upon request.

FWP Burial Products

Monarch® Vault

Limited Protection • Single Reinforced Burial Vault • White - Item #10455 • Yellow - Item #10460



Inside Dimensions

86 ¼" L x 30" W x 23" H

Outside Dimensions

89 ¼" L x 33 ¼" W x 25 ½" H

Lid Height

7 ½"

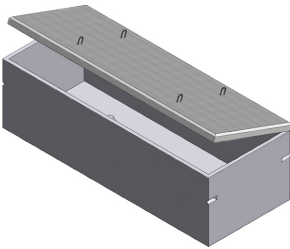
Total Weight

2100 lbs

The Monarch® is a basic burial vault that offers a basic level of protection with a concrete exterior and no plastic liner. It is a sealed burial vault, but is not 100% watertight. Customized name plate available upon request.

Grave Box • Oversized Grave Box

Item #10300 • Item #10315



Grave Box

Inside Dimensions

86 ¼" L x 30" W x 23 ⅞" H

Outside Dimensions

88 ½" L x 33 ½" W x 27 ¾" H

Lid Height

2 ¾"

Total Weight

1800 lbs

Oversized Grave Box

Inside Dimensions

90 ¼" L x 34" W x 23 ¾" H

Outside Dimensions

92 ¾" L x 36 ¾" W x 27 ½" H

Lid Height

2 ¾"

Total Weight

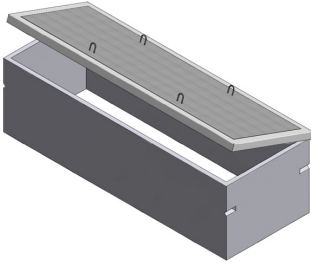
1890 lbs

The Grave Box and Oversized Grave Box are basic burial units. They support the weight of the earth to protect the integrity of the cemetery landscape but are not sealed. Drain holes are provided to allow for moisture to drain out of the box as the ground water levels recede. Both boxes come with a one-piece lid. An option for a five piece lid is available upon request for the Grave Box only.

FWP Burial Products

Grave Liner

Item #10405



Inside Dimensions

87" L x 30 3/4" W x 24 1/2" H

Outside Dimensions

90" L x 33 1/2" W x 24 1/2" H

Lid Height

2 1/2"

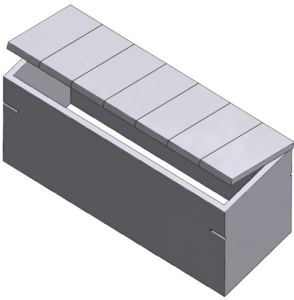
Total Weight

1500 lbs

Similar to the Grave Box, a Gravel Liner supports the weight of the earth and protects the integrity of the cemetery landscape. The bottom of the Grave Liner is open to allow for the burial vessel to be in contact with the earth. It is not a sealed burial unit.

40" Grave Liner • Burial Sectional Lid

Item #10430 • Item #10280



40" Grave Liner

Inside Dimensions

85 3/4" L x 29 3/4" W x 42" H

Outside Dimensions

90" L x 34 1/4" W x 42" H

Lid Height

2 1/2"

Total Weight

2178 lbs

Burial Sectional Lid

Dimensions

34" L x 13" W x 2 1/2" H

Total Weight

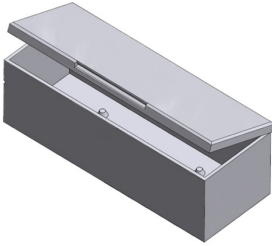
88 lbs

Similar to the Grave Liner, the 40" Grave Liner also known as the Muslim Liner supports the weight of the earth and protects the integrity of the cemetery landscape. The bottom of the 40" grave liner is open to allow for the burial vessel to be in contact with the earth. It does not include the burial sectional lids when purchased. Seven lids are required for each 40" Grave Liner.

FWP Burial Products

Single-Depth Lawn Crypt

Item #10500



Inside Dimensions

86 ¼" L x 30" W x 23 7/8" H

Outside Dimensions

88 ½" L x 32 ½" W x 27 ¾" H

Lid Height

3 ¾"

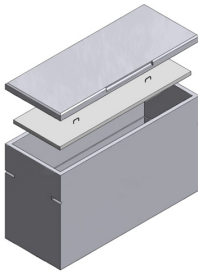
Total Weight

1976 lbs

The Single-Depth Lawn Crypt offers limited protection and are not sealed. They are made with high-strength reinforced concrete and have a solid bottom with drain holes.

Double-Depth Lawn Crypt

Item #11000



Inside Dimensions

85 ¼" L x 29 ½" W x 52 ½" H

Outside Dimensions

92 ½" L x 36 ¾" W x 55 ½" H

Lid Height

3 ¾"

Total Weight

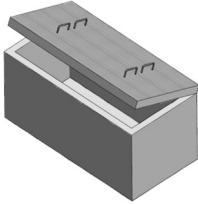
5442 lbs

The Double-depth Lawn Crypt offers limited protection and are not sealed. They are made with high-strength reinforced concrete and consists of a solid bottom with drain holes and an inner lid that allows for separation between burial vessels within the unit.

FWP Burial Products

Youth Grave Boxes

The Youth Grave Boxes are the most basic burial unit. Youth Grave boxes offer limited protection and are not sealed. They are structured to support the weight of the earth and to protect the integrity of the cemetery landscape. Drain holes are provided to allow for moisture to drain out of the box as the ground water levels recede.



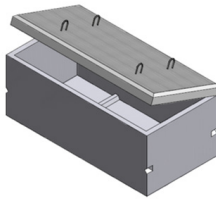
18" x 36" - Item #10325

Inside Dimensions
33" L x 15 5/8" W x 16" H

Outside Dimensions
36" L x 18 1/8" W x 18" H

Lid Height
1 7/8"

Total Weight
441 lbs



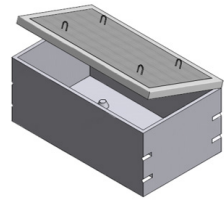
24" x 48" - Item #10330

Inside Dimensions
45" L x 21 1/2" W x 15 5/8" H

Outside Dimensions
48" L x 24" W x 18 5/8" H

Lid Height
2 5/8"

Total Weight
826 lbs



34" x 56" - Item #10335

Inside Dimensions
54" L x 31" W x 21 1/4" H

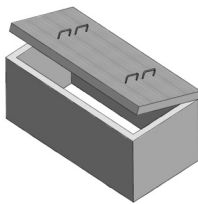
Outside Dimensions
56 1/4" L x 33 1/2" W x 24 1/4" H

Lid Height
2 1/2"

Total Weight
1424 lbs

Youth Grave Liners

Similar to the Youth Grave Box, a Youth Gravel Liner supports the weight of the earth and protect the integrity of the cemetery landscape. The bottom of the Youth Grave Liner is open to allow for the burial vessel to be in contact with the earth.



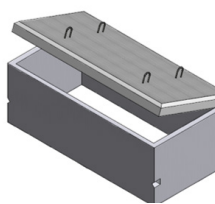
18" x 36" - Item #10415

Inside Dimensions
33" L x 15 5/8" W x 16" H

Outside Dimensions
36" L x 18 1/8" W x 16" H

Lid Height
1 7/8"

Total Weight
311 lbs



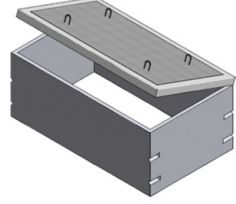
24" x 48" - Item #10420

Inside Dimensions
45" L x 21 1/2" W x 15 5/8" H

Outside Dimensions
48" L x 24" W x 15 5/8" H

Lid Height
2 5/8"

Total Weight
554 lbs



34" x 56" - Item #10425

Inside Dimensions
54" L x 31" W x 21 1/4" H

Outside Dimensions
56 1/4" L x 33 1/2" W x 21 1/4" H

Lid Height
2 1/2"

Total Weight
1008 lbs

Loved and Cherished® Casket/Vault Combo



The Loved and Cherished® infant casket and vault offers the same grave protection as a full-sized burial vault. It consists of a velvet interior with a matching pillow and includes a Loved and Cherished bear.

19" – Item #10782

Inside Dimensions
18 ¼" L x 9" W x 6 ¼" H

Outside Dimensions
20" L x 9 ¾" W x 7" H

Lid Height
2"

Total Weight
8 lbs

24" – Item #10784

Inside Dimensions
24" L x 9 ½" W x 7 ½" H

Outside Dimensions
25 ½" L x 12" W x 8" H

Lid Height
3"

Total Weight
24 lbs

31" – Item #10786

Inside Dimensions
30¾" L x 10" W x 9¼" H

Outside Dimensions
36¼" L x 15" W x 10" H

Lid Height
4¾"

Total Weight
25 lbs

Urn Vaults

Bronze Triune® Urn Vault

Premium Protection • Item #10615



The Bronze Triune® Urn Vault is the finest double-reinforced urn vault featuring high-strength concrete reinforced with high-impact ABS Trilon® interior. The timeless beauty of bronze provides a richness not found in any other material.

Inside Dimensions

12 ¼" L x 12 ¼" W x 12 ¼" H

Outside Dimensions

14 ½" L x 14 ½" W x 13 ½" H

Lid Height

4 ⅛"

Total Weight

107 lbs

Copper Triune® Urn Vault

Premium Protection • Item #10625



The Copper Triune® Urn Vault is a high quality double-reinforced urn vault. The cover and base are reinforced with high-impact ABS Trilon® and copper bonded to high-strength concrete. The durability and beauty of the copper makes an exceptional material for burial vault construction.

Inside Dimensions

12 ¼" L x 12 ¼" W x 12 ¼" H

Outside Dimensions

14 ½" L x 14 ½" W x 13 ½" H

Lid Height

4 ⅛"

Total Weight

107 lbs

Stainless Steel Triune® Urn Vault

Standard Protection • Item #10655



The Stainless Steel Triune® Urn Vault is an affordably priced double-reinforced urn vault. This urn vault comes reinforced with high-impact ABS Trilon® and brilliant stainless steel bonded to high-strength concrete.

Inside Dimensions

12 ¼" L x 12 ¼" W x 12 ¼" H

Outside Dimensions

14 ½" L x 14 ½" W x 13 ½" H

Lid Height

4 ⅛"

Total Weight

107 lbs

Cameo Rose Triune® Urn Vault

Standard Protection - Item #10620



The Cameo Rose Triune® Urn Vault is an elegant selection. Reinforced with high-impact ABS Trilon® and brilliant stainless steel bonded to high-strength concrete. The carapace features a brushed stainless steel finish with a Cameo Rose plaque and nameplate.

Inside Dimensions

12 ¼" L x 12 ¼" W x 12 ¼" H

Outside Dimensions

14 ½" L x 14 ½" W x 13 ½" H

Lid Height

4 ⅛"

Total Weight

107 lbs

Urn Vaults

Venetian Triune® Urn Vault

Basic Protection • Item #10660



The Venetian Triune® Urn Vault is a single-reinforced urn vault constructed of high-strength concrete reinforced with high-impact ABS Marbelon®. The Venetian Triune® features an elegant look of classic marble.

Inside Dimensions

12 ¼" L x 12 ¼" W x 12 ¼" H

Outside Dimensions

14 ½" L x 14 ½" W x 13 ½" H

Lid Height

4 ⅛"

Total Weight

107 lbs

Monticello® Urn Vault

Basic Protection • Item #10635



The Monticello® Urn Vault is an entry level, single-reinforced urn vault built using high-strength concrete and reinforced with Strentex®. Only available in gold.

Inside Dimensions

12 ¼" L x 12 ¼" W x 12 ¼" H

Outside Dimensions

14 ½" L x 14 ¼" W x 12 ¾" H

Lid Height

3 ⅛"

Total Weight

80 lbs

Universal® P400 Urn Vault

Basic Protection • Item #10640



The Universal® P400 Urn Vault is constructed of ABS Marbelon® creating a waterproof unit and providing protection from elements for eternity. This urn vault comes in a plastic exterior giving it the look of polished marble.

Inside Dimensions

11" L x 8 ½" W x 7 ½" H

Outside Dimensions

16" L x 13" W x 8 ½" H

Lid Height

3 ½"

Total Weight

44 lbs

Custom Precast & Cemetery Orders

Fraserway Prekast Ltd. can provide custom architectural and cemetery precast products. Please call our office at 604.534.2911 for more information on niche walls, columbariums and other cemetery products.

Contact Fraserway Prekast Ltd.

P.O. Box 3294
22765 Fraser Highway
Langley, BC, V3A 4R6

T: 604.534.2911
F: 604.533.3238

info@fraserwayprekast.com
fraserwayprekast.com



FRASERWAY PRECAST LTD

P.O. Box 3294
22765 Fraser Highway
Langley, BC, V3A 4R6

info@fraserwayprekast.com
fraserwayprekast.com