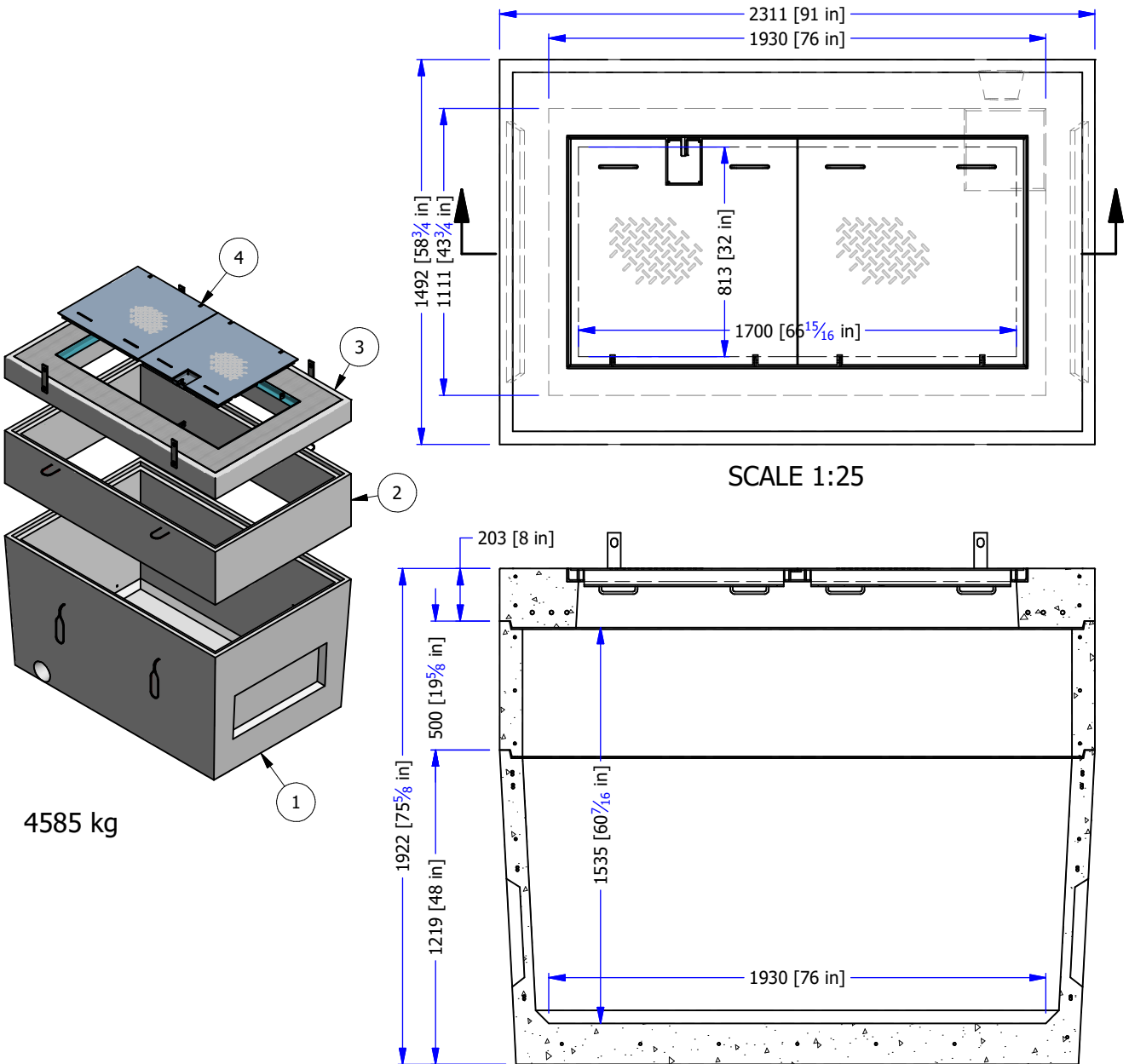


#	PART #	DESCRIPTION	ITEM #	KG
1	2122 B WMV	2122 WATER METER VAULT BASE	14310	2611
2	2121 R500	2121 VAULT RISER	14247	756
3	2121 HC PL	2121 HATCH COLLAR 2 PANEL RECESSED PADLOCK	14229	1098
4	2P PL KIT	2 PANEL PADLOCK HATCH LID KIT	12439	120



SCALE 1:25

4585 kg

- PRODUCT MANUFACTURED IN ACCORDANCE WITH CSA A23.4
- MINIMUM CONCRETE STRENGTH AT 28 DAYS: 35 MPA
- GRADE 400 REBAR
- HARD STEEL FINISH
- VAULT DESIGNED FOR BCL625 H20 LIVE LOADING
- HATCH LID DESIGNED FOR BOULEVARD USE - H20 STATIC LOADING
- STEEL PRODUCTS MANUFACTURED UNDER CSA W47.1 IN ACCORDANCE WITH CSA W59

WWW.FRASERWAYPREKAST.COM

(604) 534-2911



**FRASERWAY PREKAST LTD**  
A BMGROUP COMPANY

## 2121.5 WATER METER VAULT WITH RECESSED PADLOCK HATCH SLAB LID

SIZE  
A

DRAWING #

2121.5 WMV HL PL

REV

SHEET  
1/1