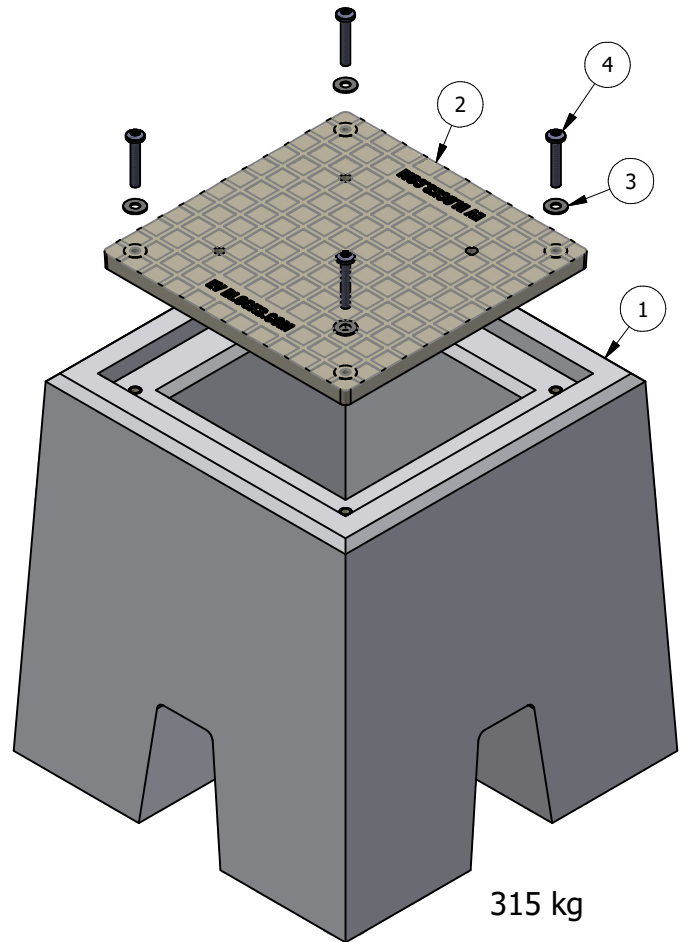
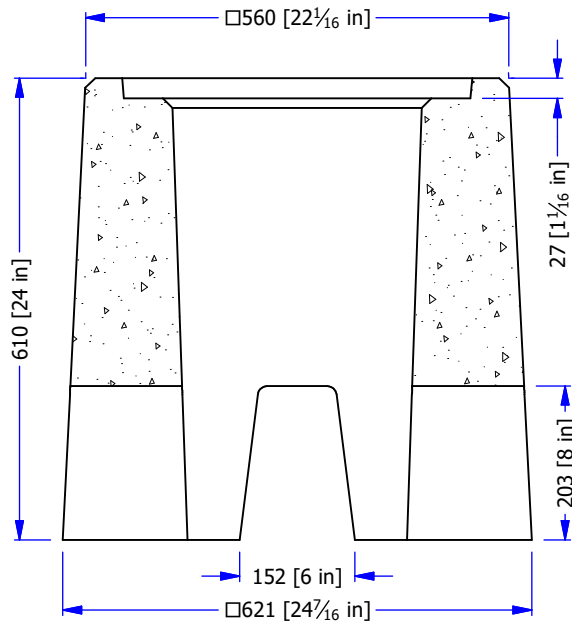
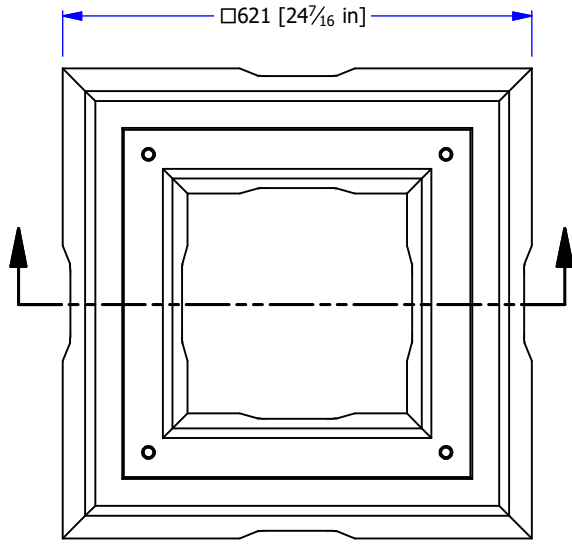


#	PART #	DESCRIPTION	KG
1	EV Block	CONCRETE 3510HF	308
2	EVB ADAPTER	SMC COMPOSITE 1" THK	7
3	FW .5	FLAT WASHER 1/2 S.S.	0
4	1/2-13unc x 3	TORX HEAD TAMPER RESISTANT S.S.	0



- MANUFACTURED IN ACCORDANCE WITH CSA A23.4
- MINIMUM CONCRETE STRENGTH AT 28 DAYS: 35 MPA
- MAXIMUM WATER-CEMENT RATIO OF 0.4 & AIR CONTENT OF 5.5-8.5%
- EXPOSURE CLASS F2/C4
- HARD STEEL FINISH

WWW.FRASERWAYPREKAST.COM

(604) 534-2911



PRECAST CONCRETE ELECTRIC VEHICLE CHARGER FOUNDATION UNITS

SIZE
A

DRAWING #

EV BLOCK

REV SHEET
1/1